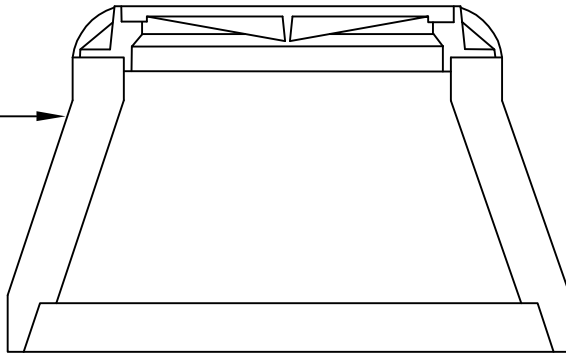
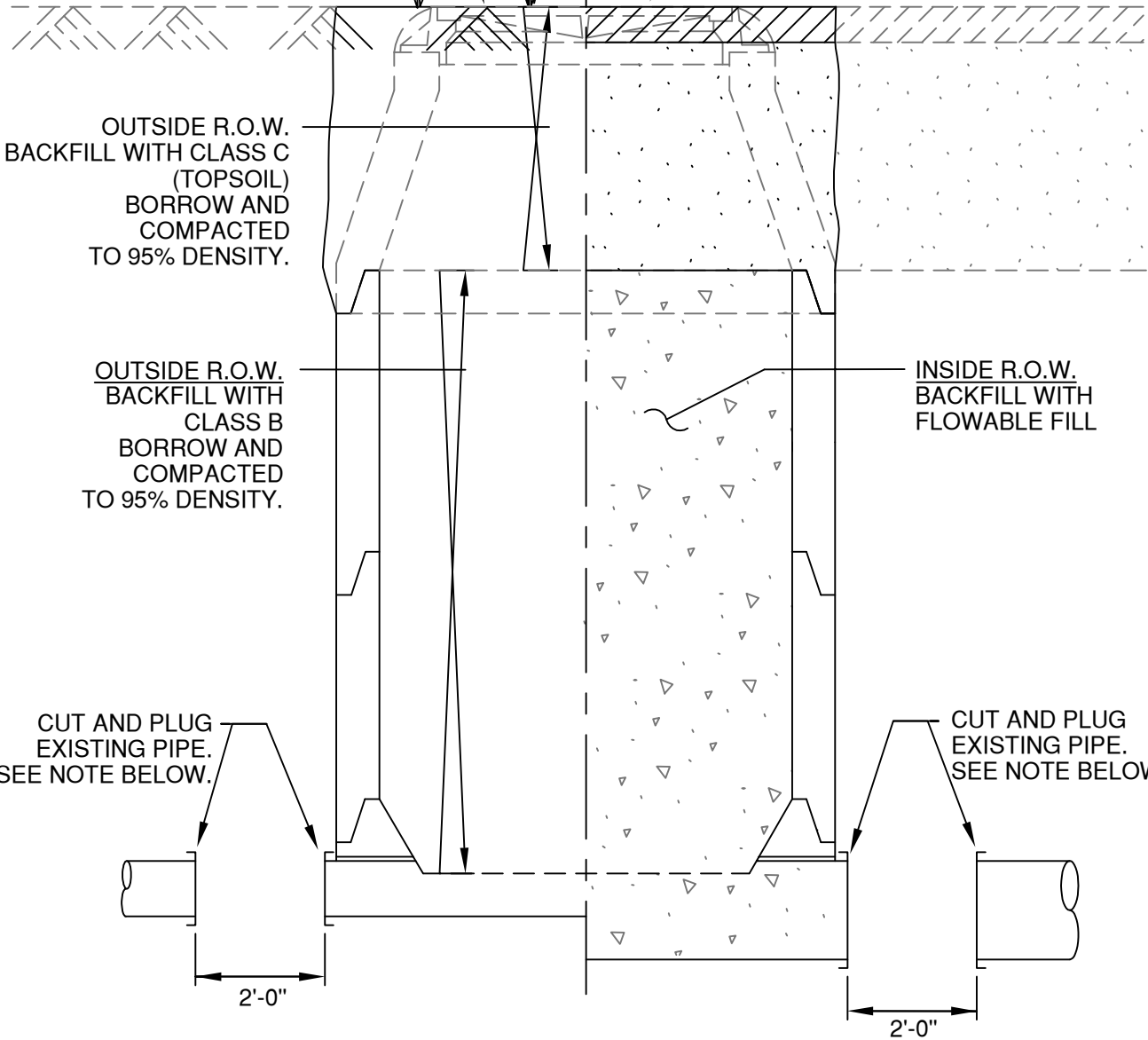


REMOVE AND DISPOSE
OF THE CONE SECTION
AND LID AS DIRECTED
BY THE ENGINEER OR
DESIGNATED
REPRESENTATIVE



REVEGETATE WITH
"SEEDING FOR EROSION
CONTROL"

"CASTING ADJUSTMENT"
FOR MISCELLANEOUS
REPAIRS AROUND MANHOLE



NOTE:
THE PLUG SHOULD BE COMPOSED OF A MATERIAL SIMILAR TO THE EXISTING PIPE AS
INSTRUCTED BY THE ENGINEER OR DESIGNATED REPRESENTATIVE.



DRAWN BY:
H Shadrock
APPROVED BY:

STANDARD DRAWING:

ABANDONED MANHOLE

UPDATED:
4-24-03

SCALE:
N.T.S.

SHEET:
1 OF 1

DRAWING NO.
340