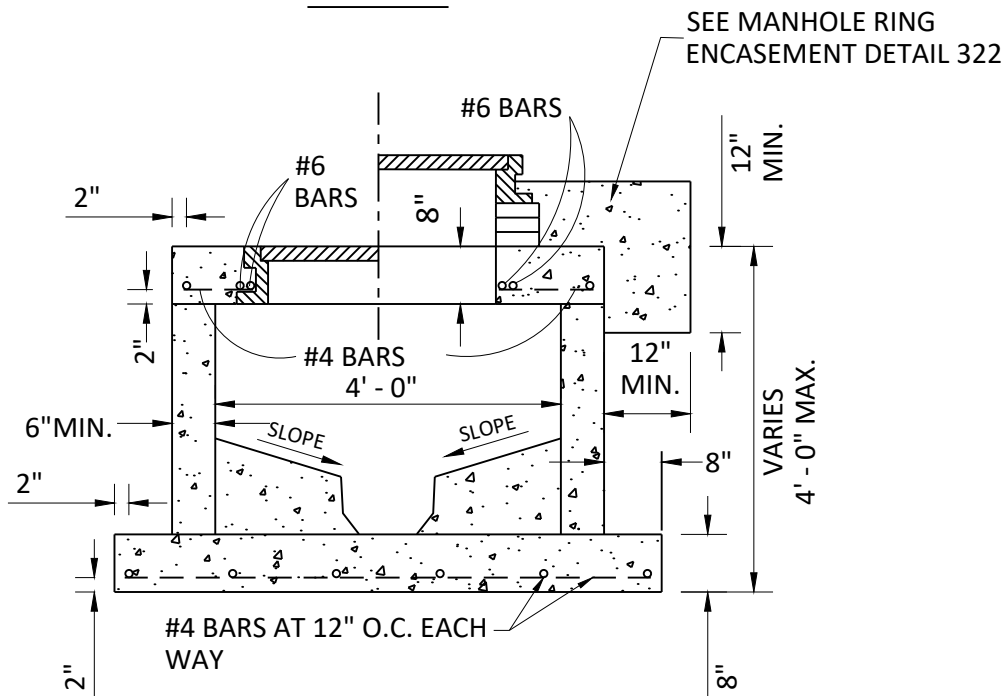


TOP SLAB



SHALLOW MANHOLE
PRECAST OR MONOLITHIC

NOTES:

1. SHALLOW MANHOLES SHALL BE PORTLAND CEMENT CONCRETE OR POLYMER CONCRETE AS REQUIRED BY NBU SPECIFICATIONS.
2. POLYMER CONCRETE SHALLOW MANHOLES SHALL BE DESIGNED AND MANUFACTURED IN ACCORDANCE WITH ASTM C478.
3. SHALLOW MANHOLES SHALL BE DESIGNED TO MEET AASHTO HL-93 LOAD RATING.