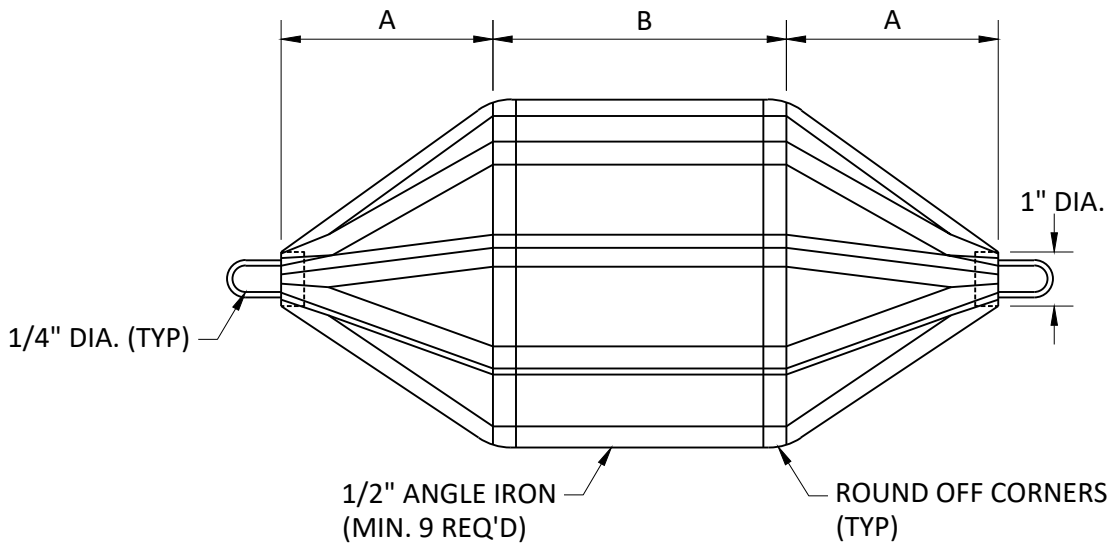


END VIEW

DIMENSIONS
 A - 67% OF PIPE I.D.
 B - 75% OF PIPE I.D.

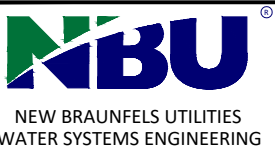


SIDE OR TOP VIEW

MANDREL REQUIREMENTS:

1. O.D. NOT LESS THAN 95% OF THE I.D. OF THE PIPE, AS SPECIFIED BY THE APPLICABLE ASTM, AWWA, UNI-BELL OR ANSI STANDARD.
2. ABLE TO WITHSTAND 200 PSI WITHOUT BEING DEFORMED.
3. ODD NUMBER OF RUNNERS OR LEGS.

*THIS INFORMATION IS PROVIDED AS A REFERENCE. ALL DEFLECTION TESTING SHALL BE DONE IN ACCORDANCE WITH TCEQ CHAPTER 217.



DRAWN BY:
EWL
 APPROVED BY:
A. WILLARD
 DRAWING DATE:
2/1/24

STANDARD DRAWING:
 UPDATED:

GO, NO GO DEFLECTION TESTING MANDREL

SCALE:
N.T.S.

SHEET:
1 OF 1

DRAWING NO.
350